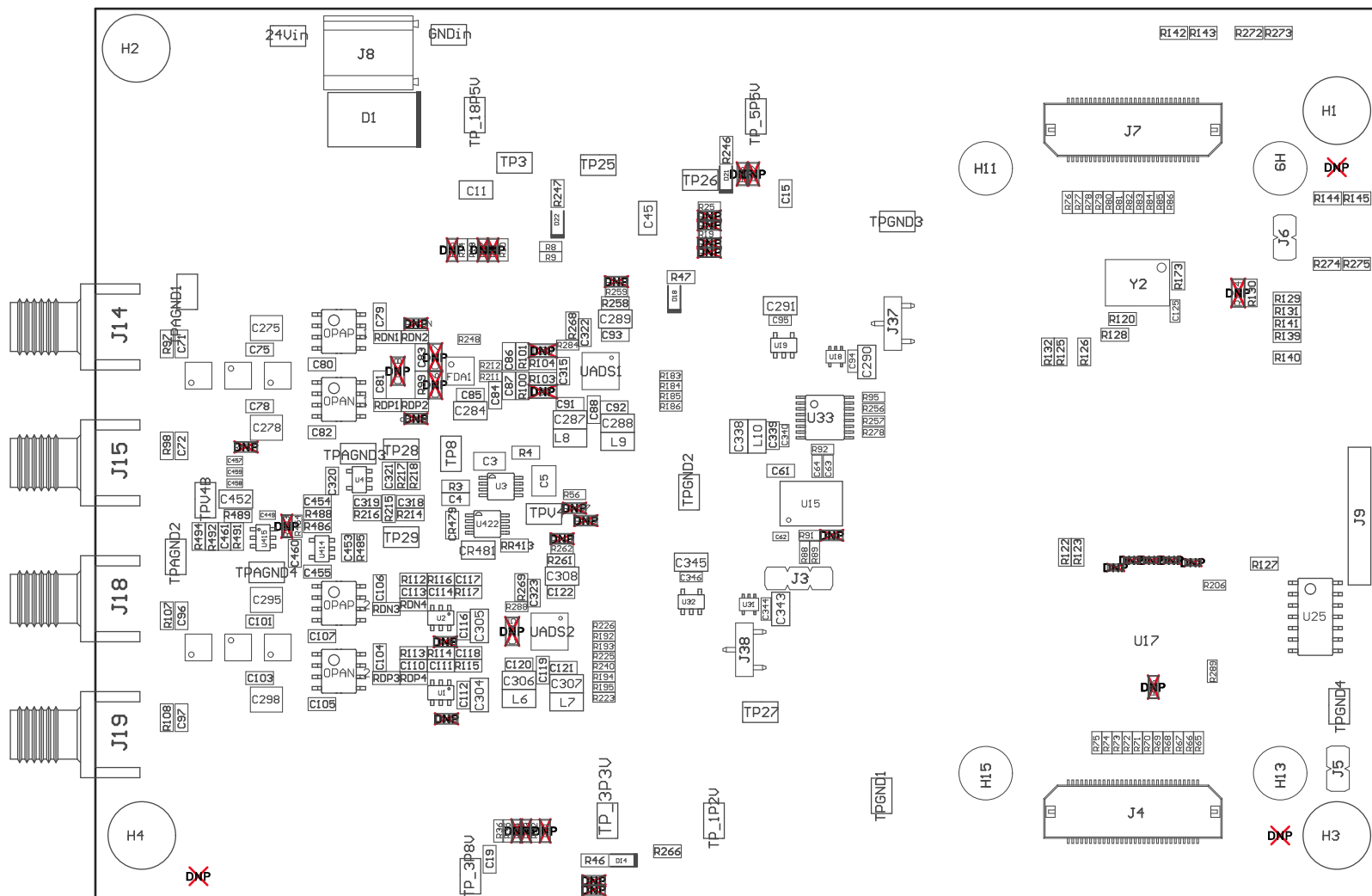


Z22 ■ These assemblies are ESD sensitive, ESD precautions shall be observed.
 Z23 ■ These assemblies must be clean and free from flux and all contaminants. Use of no clean flux is not acceptable.
 Z24 ■ These assemblies must comply with workmanship standards IPC-A-610 Class 2, unless otherwise specified.



COMPONENTS MARKED 'DNP' SHOULD NOT BE POPULATED.
 ASSEMBLY VARIANT: 001

PCB VIEWED FROM TOP SIDE	BOARD #: TIDA-01051	REV: E1	SVN REV: Not In VersionControl
	TID #: 01051		
PLOT NAME = Top Assembly Drawing	GENERATED : 4/7/2017 12:42:37 PM	TEXAS INSTRUMENTS	

